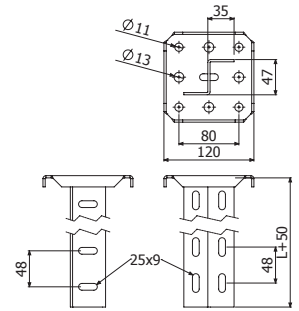


**SZ**



	L		e	Fmáx	Mmáx	Cd	GC	
	mm	inch					mm	kg
SZ 300	300	12"	3	556	54,1	0,224	2/1069	1,22
SZ 400	400	16"	3	556	54,1	0,259	2/1070	1,45
SZ 500	500	20"	3	556	54,1	0,345	2/1071	1,69
SZ 600	600	24"	3	556	54,1	0,483	2/1072	1,95

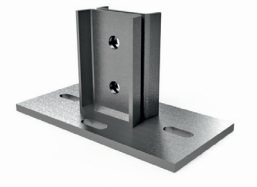
SCR/SRB/SPL/SHL + 2/100 x B2 (2/6792-GC)



**KI8 + I8**



KI8+I8



KI8



TFI8

	L		Fmáx	Mmáx	Cd	GC	
	mm	inch				kg	kg-m
I8 600	600	24"	1337	165	0,069	2/6345	3,49
I8 1000	1000	39 3/8"	1337	165	0,092	2/6346	5,81
I8 1300	1300	51 1/6"	1337	165	0,117	2/6347	7,55
I8 1500	1500	59"	1337	165	0,138	2/6348	8,72
I8 2000	2000	78 3/4"	1337	165	0,172	2/6349	11,62
I8 3000	3000	118 1/9"	1337	165	0,275	2/6350	17,43
KI8	-	-	-	-	-	2/6056	1,77

TFI8 PVC (2/6947)

SHV + 2/100 x DIN 933 M12x35 (0/0609-i304) + 2/100 x DIN 934 M12 (2/17604-i304)

